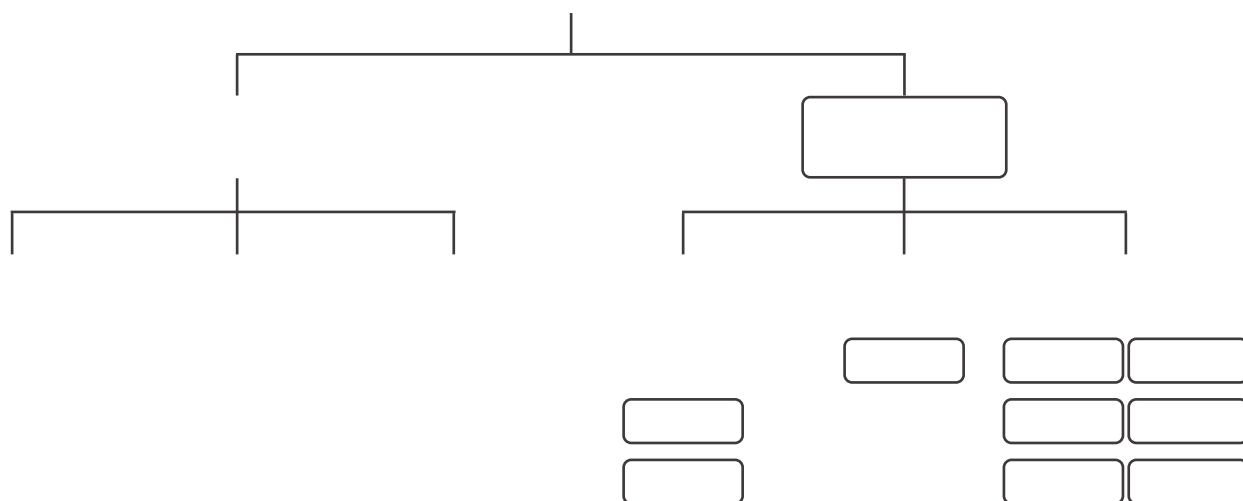
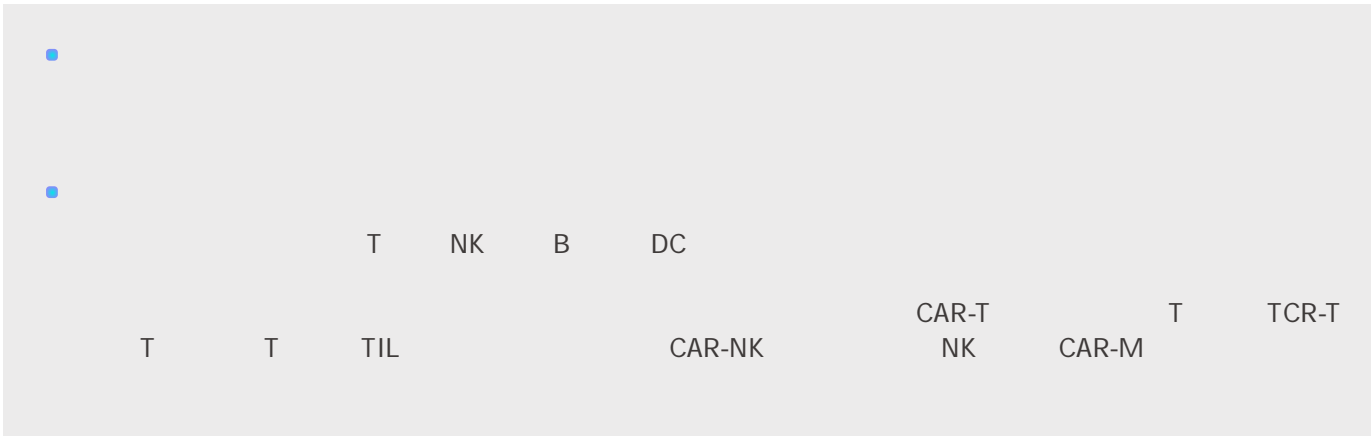


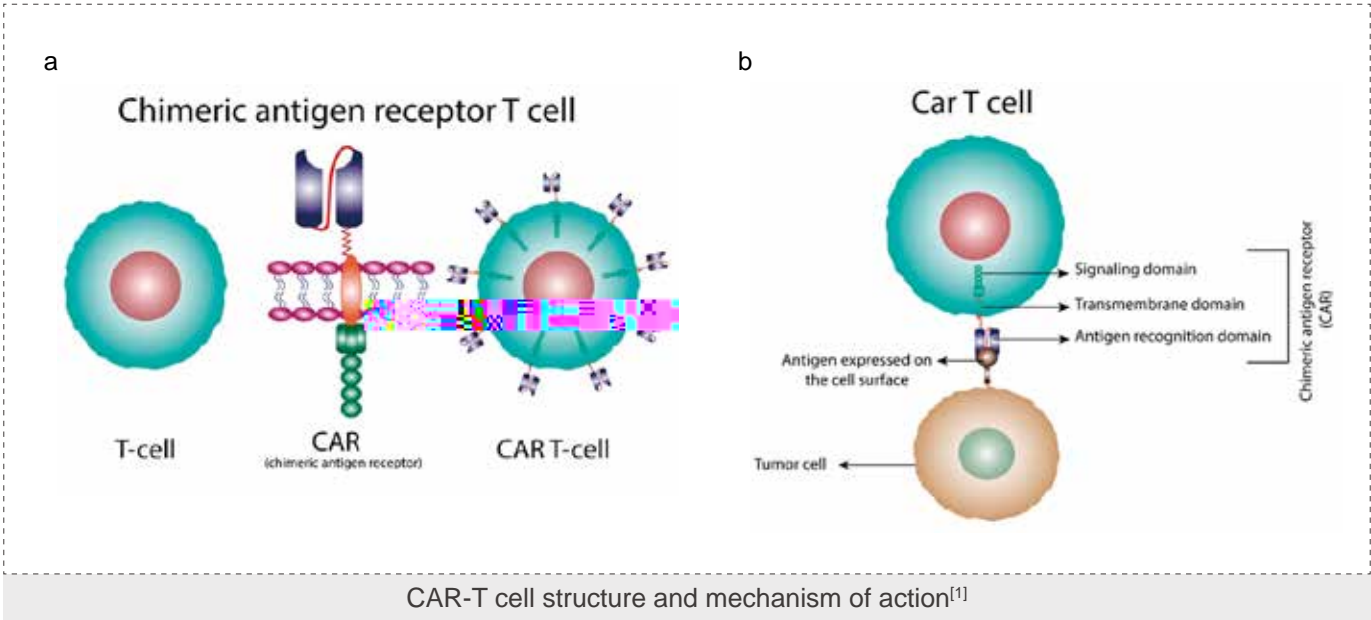
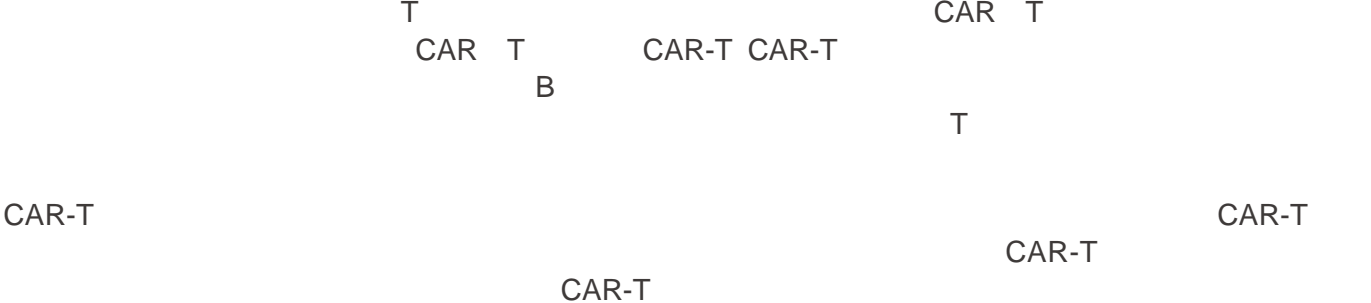
美迪西CGT研发





 CAR-T

CAR-T Chimeric Antigen Receptor T-Cell Immunotherapy





TIL (TILs) T NK CD3+ CD8+ T
 TIL TIL IL-2 TIL

TIL	T	60%+	T
CAR-T	T	0.5%	CAR T
TCR-T			TCR T
TIL		CAR-T/TCR-T	

RNA

/

LV

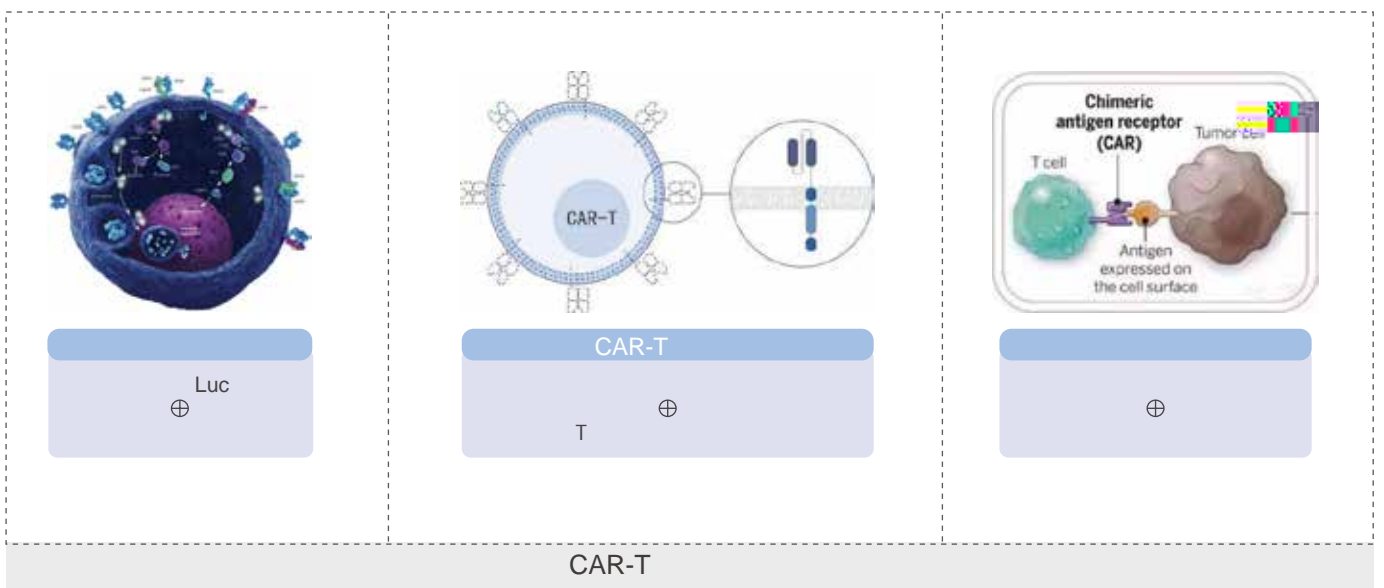
LNP

AAV Ad

T CAR-T

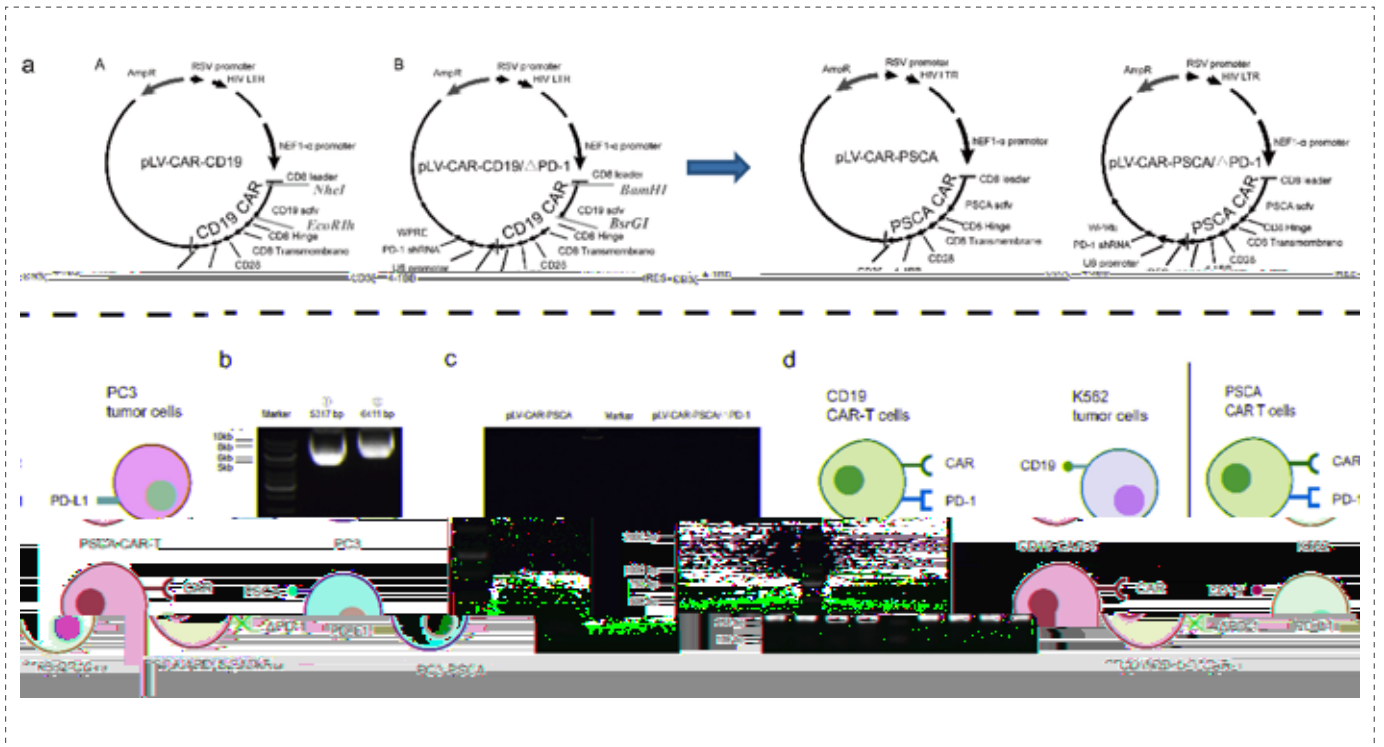
CGT

-
-
-



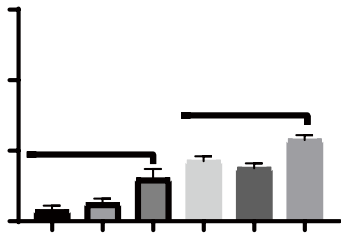
PD-1 shRNA PD-1 CAR T PD-1 CAR-T CAR-T

PD-1 PD-1 CAR-T



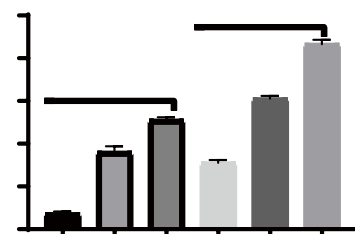
Plasmid containing PD-1 knockdown sequence^[4]

CAR-T



CAR-T

CAR-T



Mock-T



-
- IFN-
- CAR-T

-
-
-

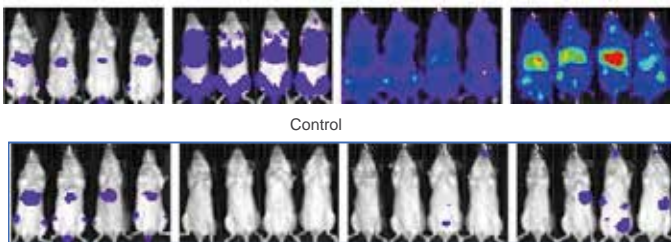
- Bioluminescent Imaging BLI
-
- ELISA MSD
-



- +
- + CDX
- + PDX
- PBMC HSC +
- +

- +
- + CDX
- PBMC HSC +
-

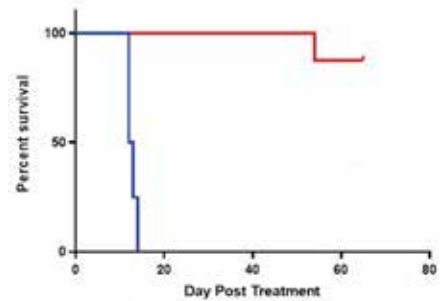
- + CDX
- + PDX
- +
- +
- PBMC HSC +
-



CAR-T + 1x10⁷ cells/mouse IV, QDx1

Groups	MST	%T/C _{MST}	P-Value
Vehicle	16.5	/	/
CAR T+	>65	>520	P<0.001

Survival proportions of Raji-luc Systemic Xenograft Model



Group 1 PBS, IV, QDx1
Group 3 1x10⁷ CAR-T+ cells/mouse, IV, QDx1 ***

Raji-luc

hPBMC

mRNA

PCR RT-qPCR

mRNA

PCR RT-qPCR

•

•ELISA FIA

•ECL

•Western blotting



[1] Yi-Ju Chen, et al. CAR-T: What Is Next? *Cancers*. 2023 Jan 21;15(3):663. doi: 10.3390/cancers15030663.

[2] Ana Rosa Saez-Ibañez, et al. Landscape of cancer cell therapies: trends and real-world data. *Nat Rev Drug Discov*. 2022 Sep;21(9):631-632. doi: 10.1038/d41573-022-00095-1.

[3] Leisheng Zhang, et al. CAR-NK cells for cancer immunotherapy: from bench to bedside. *Biomark Res*. 2022 Mar 18;10(1):12. doi: 10.1186/s40364-022-00364-6.

[4] Jing-E Zhou, et al. ShRNA-mediated silencing of PD-1 augments the efficacy of chimeric antigen receptor T cells on subcutaneous prostate and leukemia xenograft. *Biomed Pharmacother*. 2021 May;137:111339. doi: 10.1016/j.biopha.2021.111339.



400-780-8018
www.medicilon.com.cn

marketing@medicilon.com

585